

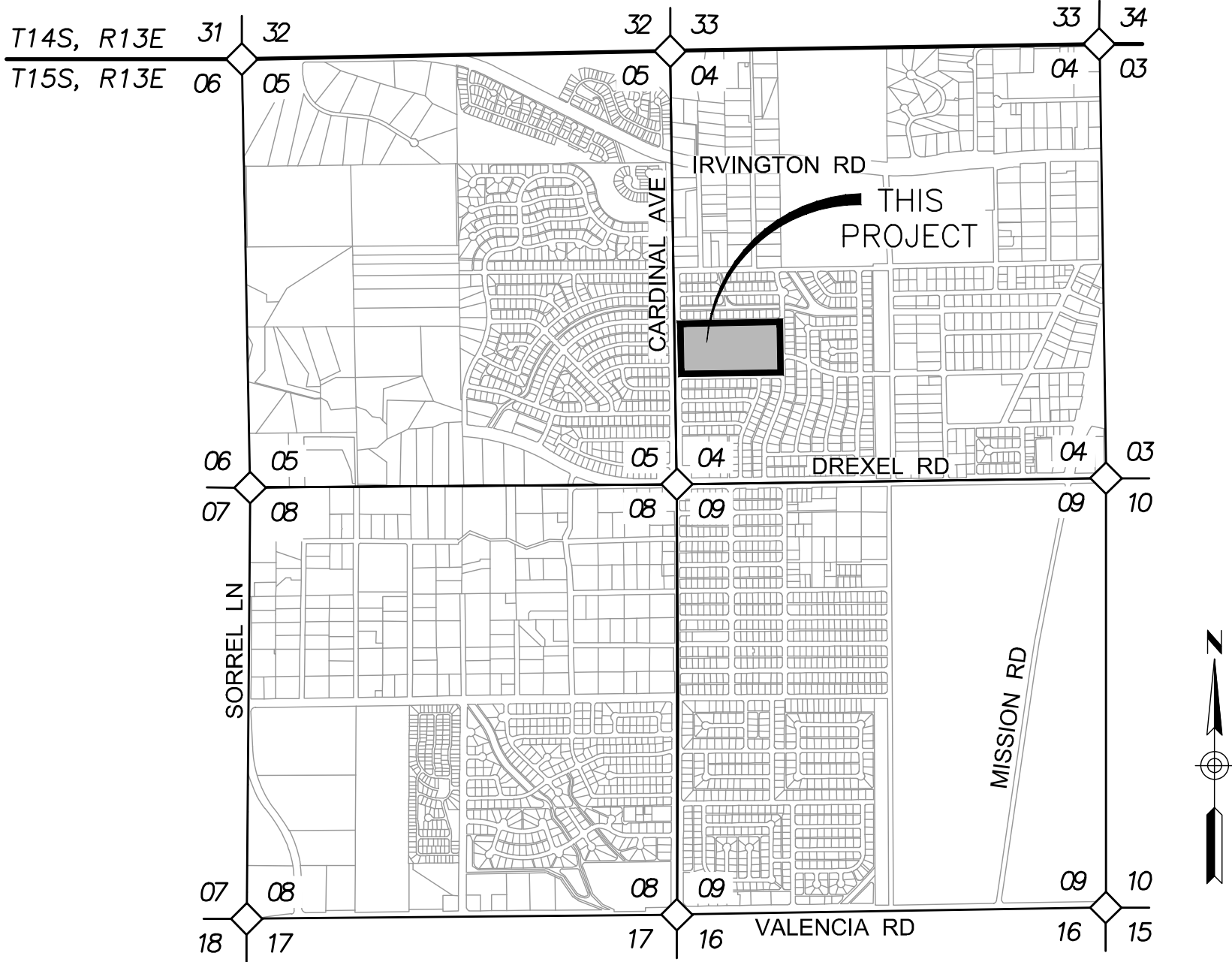
PARKING LOT RESTORATION  
FOR  
PISTOR MIDDLE SCHOOL  
TUCSON UNIFIED SCHOOL DISTRICT  
TUCSON, AZ

ENGINEER'S NOTES

- CONSTRUCTION SURVEY & STAKING IS THE RESPONSIBILITY OF THE CONTRACTOR.
- EXISTING OR NEWLY DAMAGED AND/OR DISPLACED CONCRETE CURB, GUTTER, SIDEWALK, OR DRIVEWAY SLAB SHALL BE REPAIRED OR REPLACED, BEFORE FINAL ACCEPTANCE OF THE WORK.
- FINISH GRADE ELEVATIONS NOTED ARE THE FINAL SURFACE ELEVATIONS. CONTRACTOR IS RESPONSIBLE FOR OVEREXCAVATING AS NECESSARY TO ENSURE SURFACE FINISHES, SUCH AS RIPRAP, DECOMPOSED GRANITE, TURF, ETC, MEET FINISH GRADES PER PLAN.
- EXISTING LANDSCAPE IRRIGATION LINES & APPURTENANCES IMPACTED BY CONSTRUCTION ACTIVITIES, SHALL BE REPLACED IN-KIND.
- CONTRACTOR IS RESPONSIBLE FOR COORDINATING ALL CONSTRUCTION ACTIVITIES WITH IMPACTED UTILITY OWNERS, INCLUDING UTILITIES LOCATED WITHIN ON-SITE EASEMENTS & WITHIN THE RIGHT-OF-WAY.
- IF A FIRE HYDRANT IS NEEDED TO OBTAIN CONSTRUCTION WATER, THE CONTRACTOR SHALL OBTAIN A PERMIT FOR CONTRACTOR USE OF COTWD CONSTRUCTION WATER METER & PAY ALL APPLICABLE FEES & CHARGES.
- UNDERGROUND UTILITIES OF RECORD ARE SHOWN AS ACCURATELY AS POSSIBLE. LOCATIONS ARE BASED ON FIELD SURVEYS OF VISIBLE PEDESTALS, TRANSFORMERS, METER BOXES, AND INFORMATION PROVIDED BY TUSD FORCES. ENGINEER ASSUMES NO RESPONSIBILITY FOR IMPROPER LOCATIONS OR FAILURE TO SHOW UTILITY LOCATIONS ON CONSTRUCTION PLANS. THE CONTRACTOR SHALL VERIFY HORIZONTAL AND VERTICAL LOCATION OF ALL UTILITIES PRIOR TO ANY CONSTRUCTION AND ASSUMES FULL RESPONSIBILITY FOR ANY DAMAGE AND/OR REPAIR THERETO. CALL BLUESTAKE 1-800-782-5348 TWO FULL WORKING DAYS PRIOR TO EXCAVATION.
- FOR PAVEMENT DESIGN INFORMATION, REFER TO THE PAVEMENT DESIGN REPORT PREPARED FOR THIS PROJECT BY SMITH & ANNALA ENGINEERING, CO, (SAECO), DATED JUNE 24, 2022, PROJECT NUMBER 29.22.2409.



PISTOR MIDDLE SCHOOL  
5455 SOUTH CARDINAL AVENUE  
TUCSON, AZ 85746



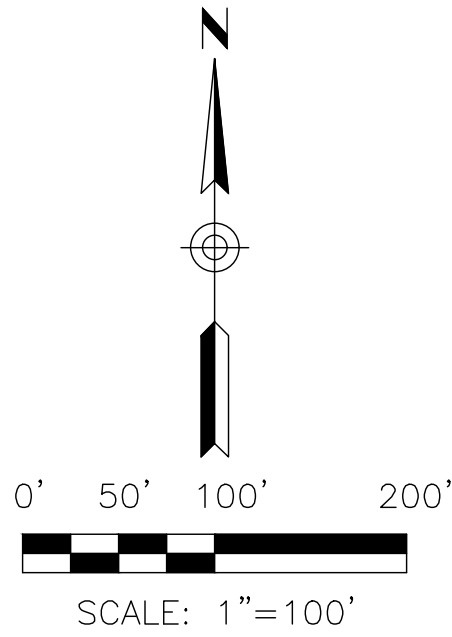
LOCATION MAP

A PORTION OF THE  
SOUTHWEST 1/4 OF SECTION 04,  
TOWNSHIP 15 SOUTH, RANGE 13 EAST,  
G&SRM, PIMA COUNTY, ARIZONA  
3" = 1 MILE

LAT: 32° 09' 12.27" N  
LONG: -111° 01' 40.36" W

SHEET INDEX

PAGE	SHEET	DESCRIPTION
1	C1.0	COVER SHEET
2	C1.1	RESULTS OF SURVEY
3	C2.1	DEMOLITION PLAN
4	C3.1	SITE PLAN
5	C4.1	GRADING & DRAINAGE PLAN



OWNER:  
TUCSON UNIFIED SCHOOL DISTRICT  
1010 E. TENTH ST.  
TUCSON, AZ 85719  
P. 520.225.6000  
www.tusd1.org

CIVIL ENGINEER:  
DIBBLE  
SUITE 1000  
177 N. CHURCH AVENUE  
TUCSON, AZ 85701  
P. 520.495.4065  
www.dibblecorp.com

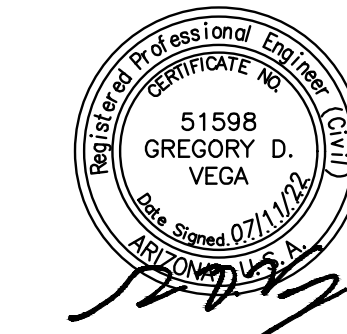
PARKING LOT RESTORATION

TUCSON, AZ  
PISTOR MIDDLE SCHOOL

DIBBLE

1018110.26

Project No.:  
Designed: GDV Date: 07/2022  
Drawn: DGV Date: 07/2022  
Checked: GDV

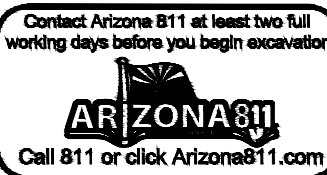


COVER SHEET

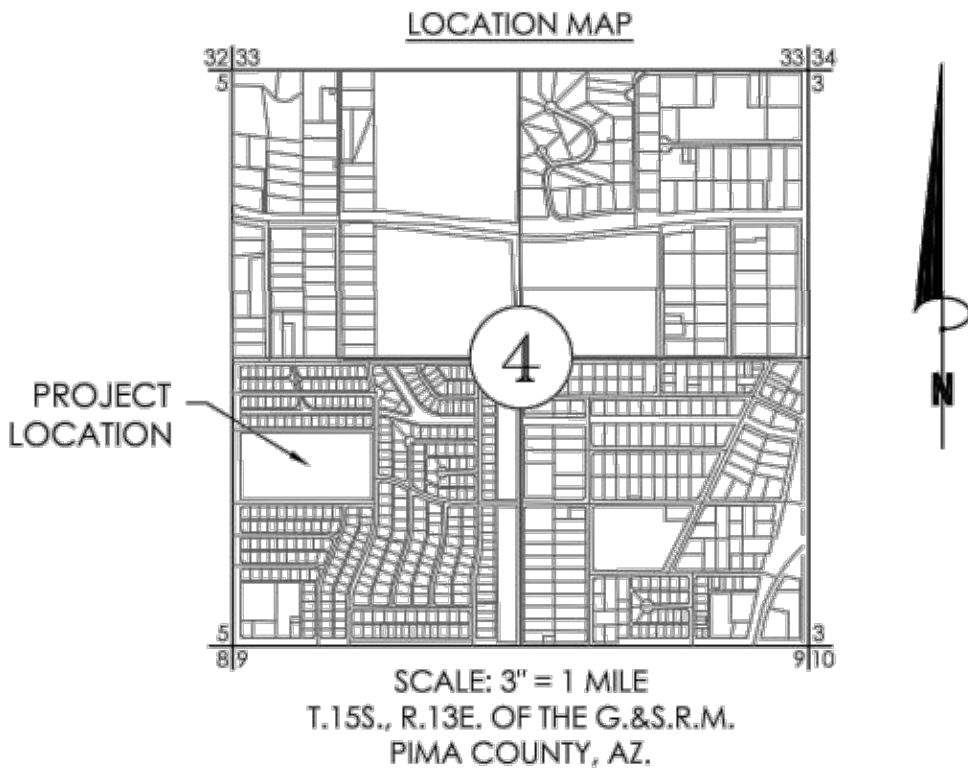
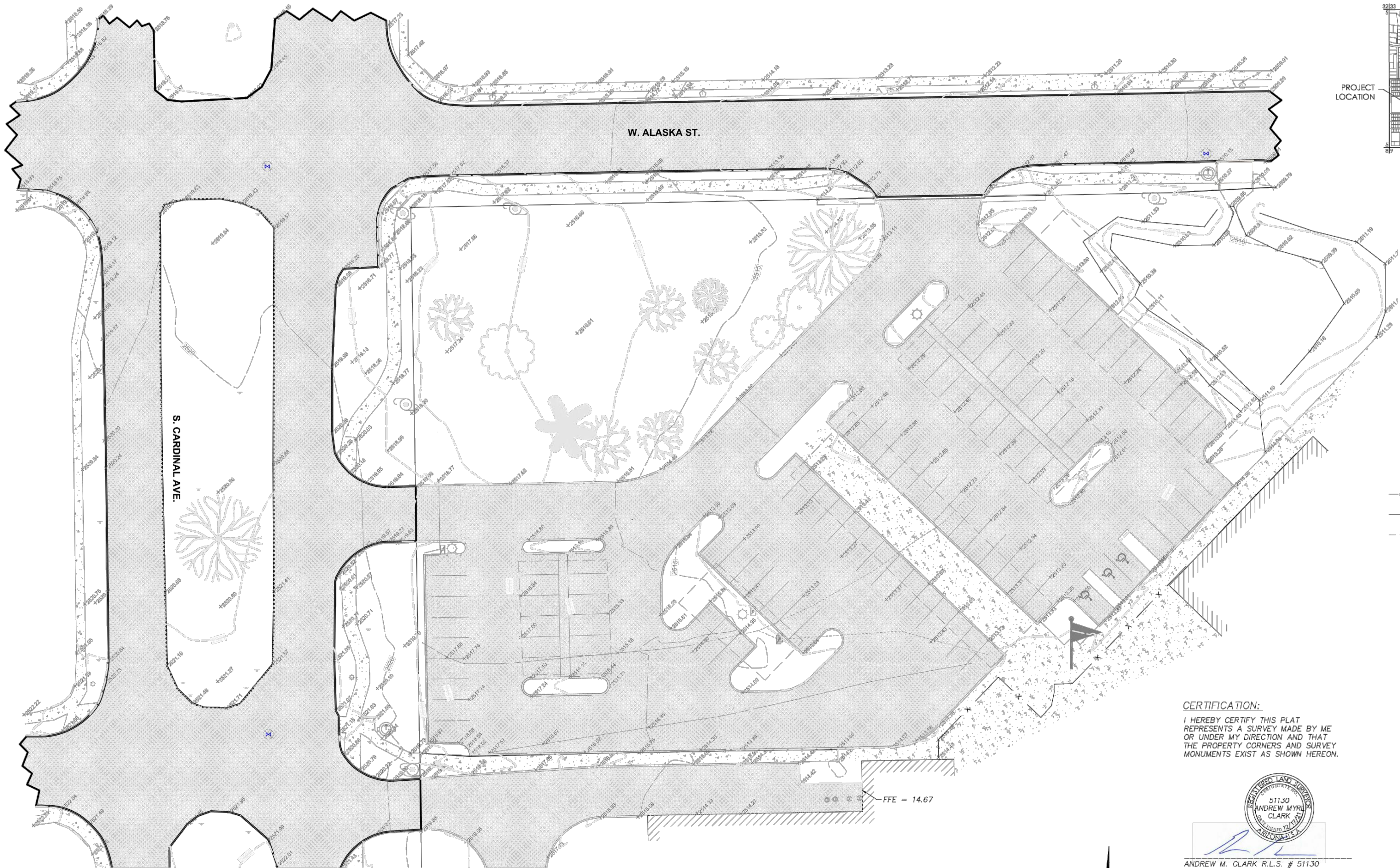
SHEET: C1.0

SCALE: AS SHOWN

PAGE 1 OF 5







SCALE: 3" = 1 MILE  
T.15S., R.13E. OF THE G.&S.R.M.  
PIMA COUNTY, AZ.

- LEGEND:**
- ASPHALT PAVEMENT
  - BUILDING AREA
  - CONCRETE
  - ELECTRIC BLUESTAKE
  - FENCE
  - SOLAR PANEL
  - ELECTRIC JUNCTION BOX
  - FIRE HYDRANT
  - FLAG POLE
  - HANDICAP PARKING
  - LIGHT POLE
  - MAIL BOX
  - MESQUITE TREE
  - PALO VERDE TREE
  - PALM TREE
  - POWER POLE
  - SEWER CLEANOUT
  - SIGN
  - STREET LIGHT POLE
  - UNKNOWN TREE
  - WATER VALVE

**CERTIFICATION:**  
I HEREBY CERTIFY THIS PLAT  
REPRESENTS A SURVEY MADE BY ME  
OR UNDER MY DIRECTION AND THAT  
THE PROPERTY CORNERS AND SURVEY  
MONUMENTS EXIST AS SHOWN HEREON.

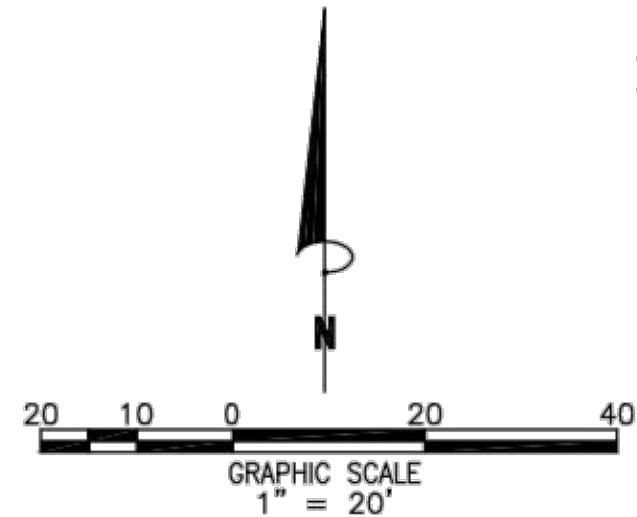
REGISTERED LAND SURVEYOR  
51130  
ANDREW MYR  
CLARK  
DESIGNED 12/17/22  
ARIZONA U.S.A.  
ANDREW M. CLARK R.L.S. # 51130

**BASIS OF BEARINGS:**

BEARINGS ARE BASED ON THE LINE AS MEASURED BETWEEN CITY OF TUCSON GPS CONTROL POINT HC10, BEING A P.K. NAIL WITH WASHER, RLS 20373, LOCATED AT THE INTERSECTION OF W. NEBRASKA ST. AND S. WESTOVER AVE. (POINT 'A') AND CITY OF TUCSON GPS CONTROL POINT HE09, BEING A LEAD CAPPED PIPE, LOCATED AT THE INTERSECTION OF W. DREXEL RD. AND S. CARDINAL AVE. (POINT 'B'). SAID BEARING BEING SOUTH 44° 23' 51" WEST.

**BASIS OF ELEVATIONS:**

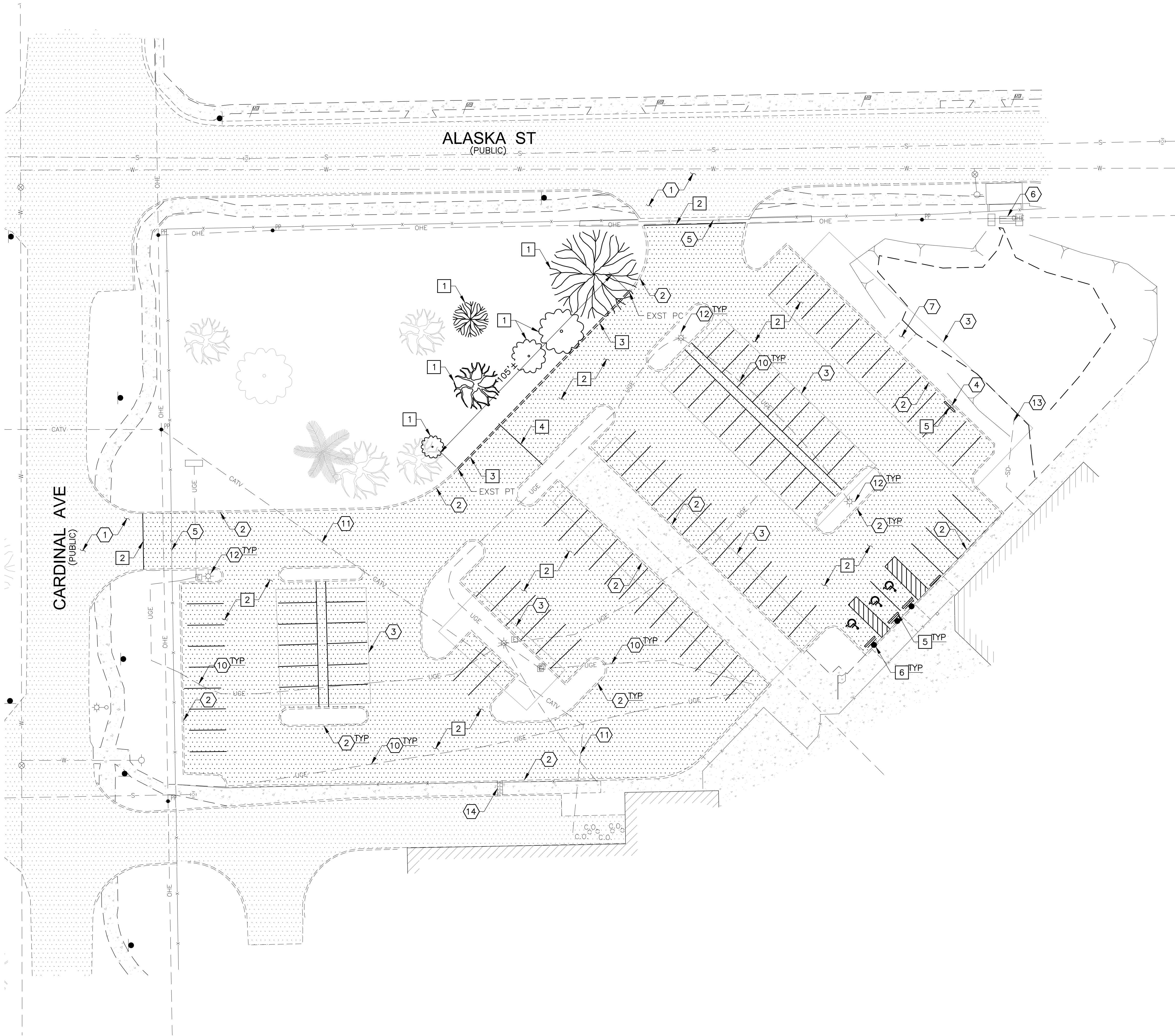
ELEVATIONS ARE BASED ON CITY OF TUCSON GPS CONTROL POINT HC10, BEING A P.K. NAIL WITH WASHER, RLS 20373, LOCATED AT THE INTERSECTION OF W. NEBRASKA ST. AND S. WESTOVER AVE. SAID ELEVATION IS 2486.64, NAVD88.



RESULTS OF SURVEY				
AS-BUILT OF TUSD - PISTOR MIDDLE SCHOOL PARKING LOT				
<b>Bowman</b>				
7464 N. La Cholla Blvd. Tucson, Arizona 85741 Phone: (520) 463-3200 www.bowman.com © Bowman Consulting Group, Ltd.				
SCALE H: 1"=20'	DRAWN: LC	DATE: 06-28-22	JOB No. 091122-01-001	SHEET
C.I.: 1"	DESIGN: CHKD: AMC	REV. DATE:	REV. DATE:	2 OF 5



FILE:1\2018\1018110.26\_Pistor\_Parking\_Lot\CAD\18110.26\_C2X\_DEMO.dwg DATE:7/11/2022 TIME:10:35 AM (by:doug.willie)



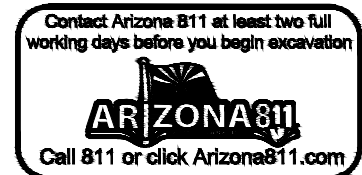
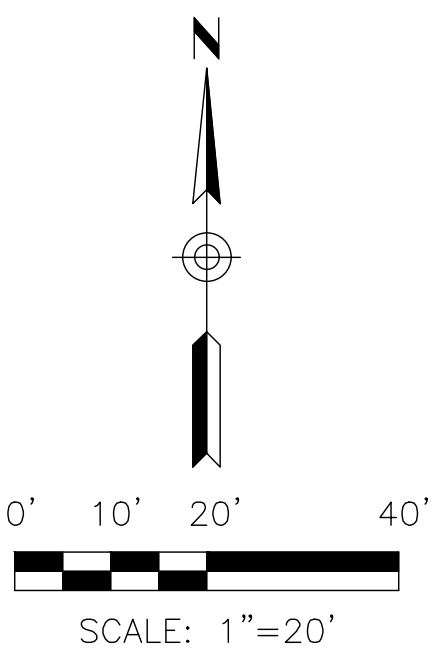
- REMOVAL NOTES**
- 1 REMOVE TREE/VEGETATION
  - 2 REMOVE ASPH PVMT, FULL DEPTH  
PROVIDE STRAIGHT LINE AT SAW CUTS  
CLEAN & TACK FOR NEW ASPH
  - 3 SAW CUT & REMOVE CONC VERT CURB
  - 4 REMOVE GATE, POSTS & CONC FOUNDATIONS
  - 5 REMOVE CONC WHEEL STOP,  
SALVAGE & REPLACE, PER PLAN
  - 6 REMOVE ADA PARKING SIGN,  
SALVAGE & REPLACE, PER PLAN



OWNER:  
TUCSON UNIFIED SCHOOL DISTRICT  
1010 E. TENTH ST.  
TUCSON, AZ 85719  
P. 520.225.6000  
www.tusd1.org

CIVIL ENGINEER:  
DIBBLE  
177 N. CHURCH AVENUE  
SUITE 1000  
TUCSON, AZ 85701  
P. 520.495.4065  
www.dibblecorp.com

- REFERENCE NOTES**
- 1 ASPH PVMT  
PROTECT IN PLACE
  - 2 CONC VERT CURB  
PROTECT IN PLACE
  - 3 PHOTOVOLTAIC SOLAR PANEL STRUCTURE  
PROTECT IN PLACE
  - 4 PHOTOVOLTAIC SOLAR ELEC EQUIP  
PROTECT IN PLACE
  - 5 METAL GATE  
PROTECT IN PLACE
  - 6 CONC WEIR STRUCTURE TO REMAIN  
PROTECT IN PLACE
  - 7 CONC SPILLWAY STRUCTURE TO REMAIN  
PROTECT IN PLACE
  - 10 UNDERGROUND ELEC LINE  
PROTECT IN PLACE
  - 11 UNDERGROUND CABLE TV LINE  
PROTECT IN PLACE
  - 12 LIGHT POLE AND/OR CONC FOUNDATION  
PROTECT IN PLACE
  - 13 STORM DRAIN PIPE  
PROTECT IN PLACE
  - 14 SCUPPER  
PROTECT IN PLACE



**PARKING LOT RESTORATION**  
TUCSON, AZ  
**PISTOR MIDDLE SCHOOL**

**DIBBLE**

Project No.: 1018110.26

Designed: GDV Date: 07/2022  
Drawn: DGW Date: 07/2022  
Checked: GDV Date: 07/2022



**DEMOLITION PLAN**

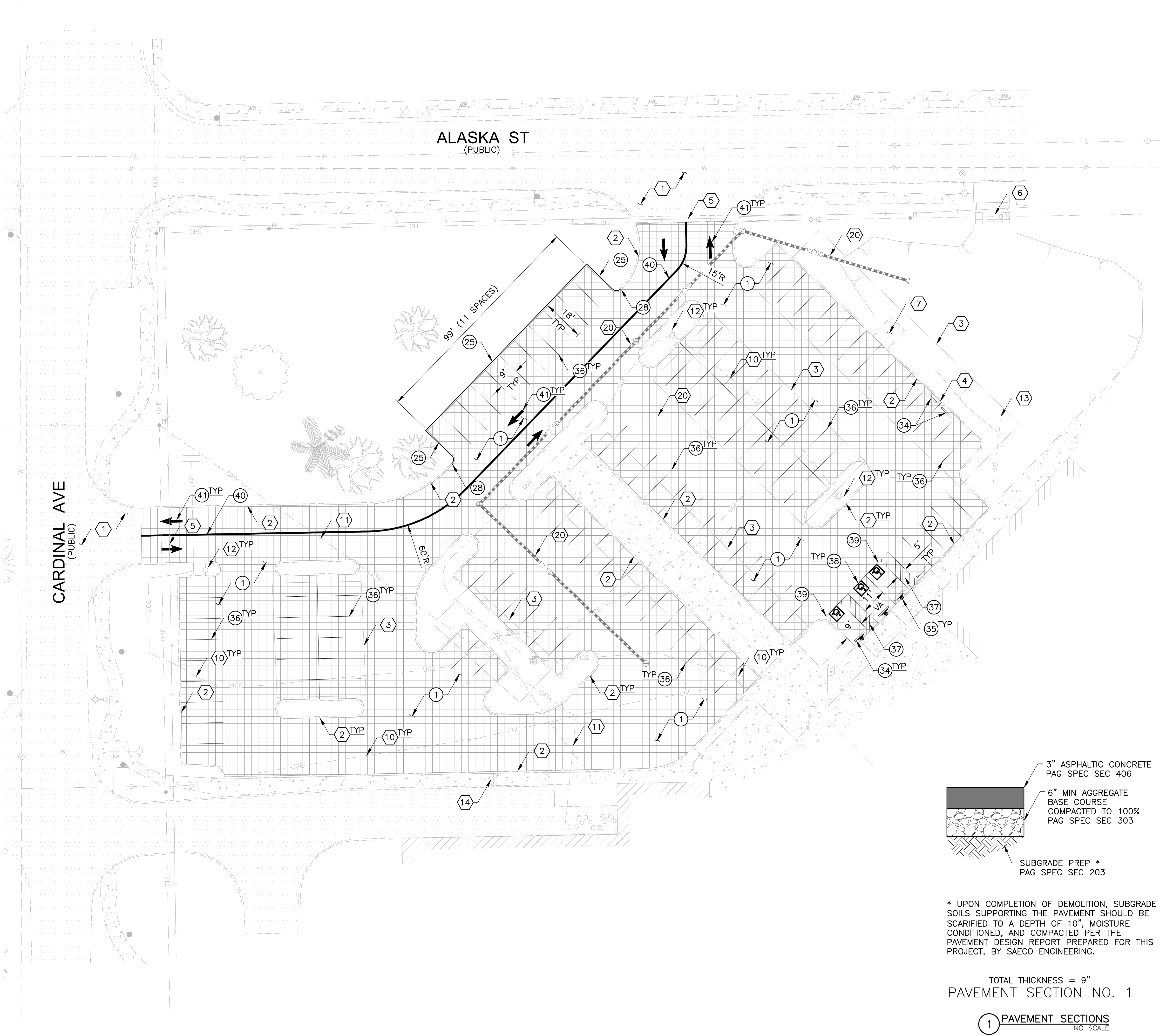
SHEET: C2.1

SCALE: 1"=20'

PAGE 3 OF 5



FILE:1\2018\1018110.26\_Pistor\_Parking\_Lot\CAD\18110.26\_C3X\_SITE.dwg DATE:7/11/2022 TIME:10:35 AM (by:doug.willis)



- CONSTRUCTION NOTES
- 1 ASPH PVMT  
3"AC/6"ABC/NATIVE COMPACTED TO 95%  
DET 1, THIS SHT
  - 25 CONC VERT CURB, TYPE 2  
PAG STD DET 209, H=6"
  - 28 CONC CURB, NEW TO EXST CONNECTION  
PAG STD DET 211
  - 34 REPLACE (OR NEW) CONC WHEEL STOP  
FACE OF WHEEL STOP 2' FROM FACE OF CURB  
CENTERED IN STALL
  - 35 REPLACE ADA PARKING SIGN & POST
  - 36 PVMT MARKING  
4" WHITE STRIPE  
PAG SPEC SECT 708
  - 37 PVMT MARKING  
4" YELLOW STRIPE, 2' OC @ 45°  
PAG SPEC SECT 708
  - 38 PVMT MARKING  
ADA PARKING STALL SYMBOL
  - 39 PVMT MARKING  
4" YELLOW STRIPE  
PAG SPEC SECT 708
  - 40 PVMT MARKING  
8" WHITE STRIPE  
PAG SPEC SECT 708
  - 41 PVMT MARKING  
DIRECTIONAL ARROW  
PAG SPEC SECT 708

- REFERENCE NOTES
- 1 ASPH PVMT  
PROTECT IN PLACE
  - 2 CONC VERT CURB  
PROTECT IN PLACE
  - 3 PHOTOVOLTAIC SOLAR PANEL STRUCTURE  
PROTECT IN PLACE
  - 4 PHOTOVOLTAIC SOLAR ELEC EQUIP  
PROTECT IN PLACE
  - 5 METAL GATE  
PROTECT IN PLACE
  - 6 CONC WEIR STRUCTURE TO REMAIN  
PROTECT IN PLACE
  - 7 CONC SPILLWAY STRUCTURE TO REMAIN  
PROTECT IN PLACE
  - 10 UNDERGROUND ELEC LINE  
PROTECT IN PLACE
  - 11 UNDERGROUND CABLE TV LINE  
PROTECT IN PLACE
  - 12 LIGHT POLE AND/OR CONC FOUNDATION  
PROTECT IN PLACE
  - 13 STORM DRAIN PIPE  
PROTECT IN PLACE
  - 14 SCUPPER  
PROTECT IN PLACE
  - 20 NEW STORM DRAIN  
REFER TO GRADING & DRAINAGE PLAN, C4.1

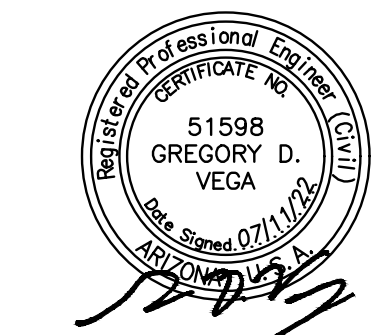
**TUSD**  
TUCSON UNIFIED SCHOOL DISTRICT  
1010 E. TENTH ST.  
TUCSON, AZ 85719  
P. 520.225.6000  
www.tusd1.org

CIVIL ENGINEER:  
DIBBLE  
177 N. CHURCH AVENUE  
SUITE 1000  
TUCSON, AZ 85701  
P. 520.495.4065  
www.dibblecorp.com

**PARKING LOT RESTORATION**  
TUCSON, AZ  
**PISTOR MIDDLE SCHOOL**

**DIBBLE**

Project No.: 1018110.26  
Designed: GDV Date: 07/2022  
Drawn: DGV Date: 07/2022  
Checked: GDV Date: 07/2022

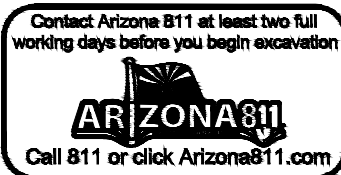


**SITE PLAN**

SHEET: C3.1

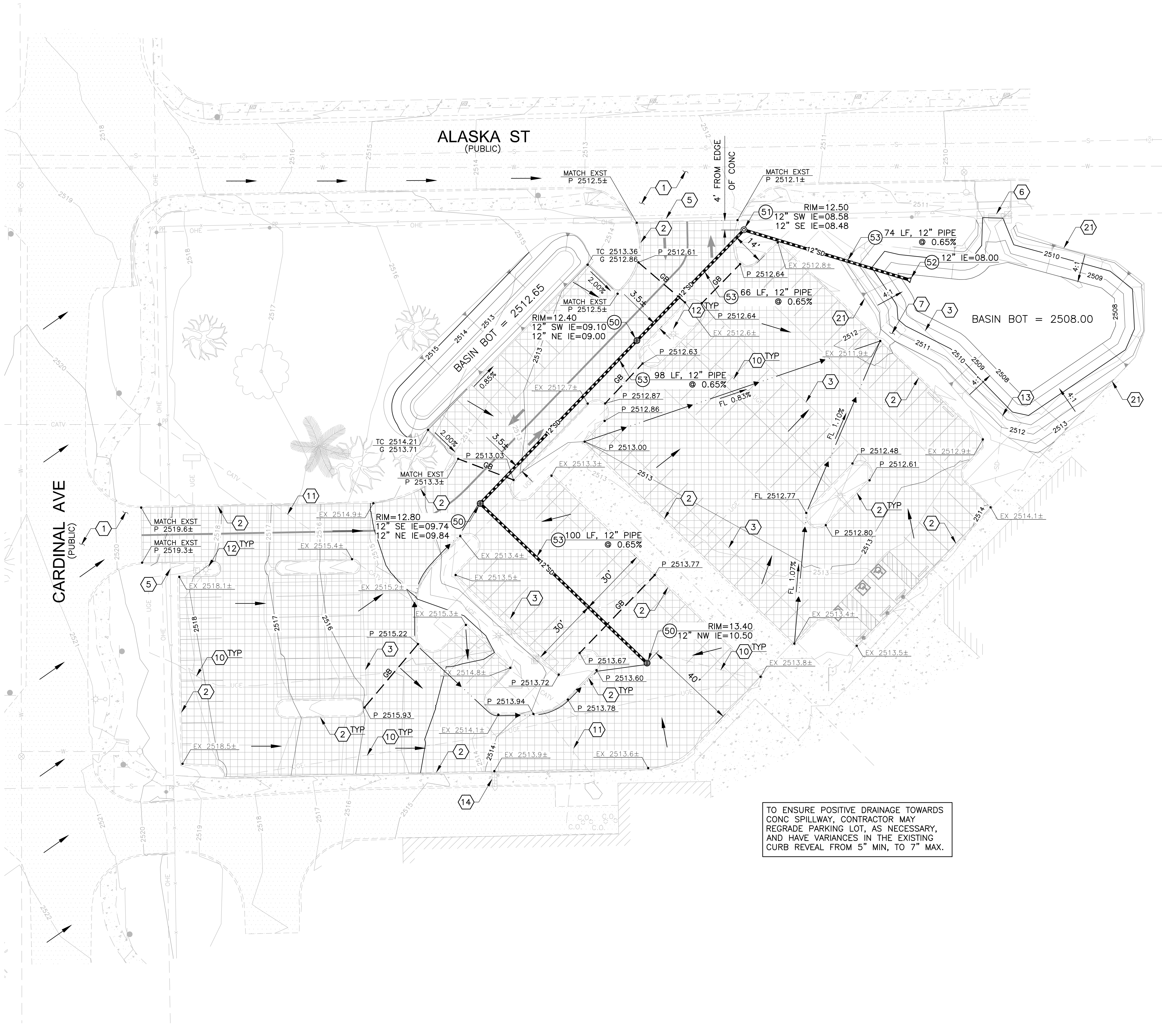
SCALE: 1"=20'

PAGE 4 OF 5





FILE:1\2018\1018110.26\_Pistor\_Parking\_Lot\CAD\18110.26\_C4X\_GRAD.dwg DATE:7/11/2022 TIME:10:35 AM (by:doug.willis)



TO ENSURE POSITIVE DRAINAGE TOWARDS  
CONC SPILLWAY, CONTRACTOR MAY  
REGRADE PARKING LOT, AS NECESSARY,  
AND HAVE VARIANCES IN THE EXISTING  
CURB REVEAL FROM 5" MIN. TO 7" MAX.

- CONSTRUCTION NOTES
- 50 24" HEAVY-DUTY DRAIN BASIN W/ SUMP INLET  
H-20 TRAFFIC RATED GRATED LID  
ADS NYLOPLAST, OR OTHER APPROVED
  - 51 24" LIGHT-DUTY DRAIN BASIN W/ SUMP INLET  
24" SOLID LID  
ADS NYLOPLAST, OR OTHER APPROVED
  - 52 FLARED END SECTION FOR 12" DIA PIPE  
ADS NYLOPLAST, OR OTHER APPROVED
  - 53 HDPE STORM DRAIN PIPE, WATER TIGHT (WT)  
LENGTH, SIZE & SLOPE PER PLAN  
ADS N-12 DUAL WALL, OR OTHER APPROVED

OWNER:  
TUCSON UNIFIED SCHOOL DISTRICT  
1010 E. TENTH ST.  
TUCSON, AZ 85719  
P. 520.225.6000  
www.tusd1.org

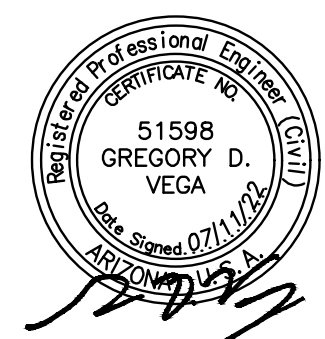
CIVIL ENGINEER:  
DIBBLE  
177 N. CHURCH AVENUE  
TUCSON, AZ 85701  
P. 520.495.4065  
www.dibblecorp.com

- REFERENCE NOTES
- 1 ASPH PVMT  
PROTECT IN PLACE
  - 2 CONC VERT CURB  
PROTECT IN PLACE
  - 3 PHOTOVOLTAIC SOLAR PANEL STRUCTURE  
PROTECT IN PLACE
  - 5 METAL GATE  
PROTECT IN PLACE
  - 6 CONC WEIR STRUCTURE TO REMAIN  
PROTECT IN PLACE
  - 7 CONC SPILLWAY STRUCTURE TO REMAIN  
PROTECT IN PLACE
  - 10 UNDERGROUND ELEC LINE  
PROTECT IN PLACE
  - 11 UNDERGROUND CABLE TV LINE  
PROTECT IN PLACE
  - 12 LIGHT POLE AND/OR CONC FOUNDATION  
PROTECT IN PLACE
  - 13 STORM DRAIN PIPE  
PROTECT IN PLACE
  - 14 SCUPPER  
PROTECT IN PLACE
  - 21 MAINTAIN LIMITS OF BASIN TOP &  
REGRADE W/ 4:1 SIDE SLOPES,  
BOT ELEV=2508.00

- LEGEND
- SURFACE FLOW DIRECTION
  - GRADE BREAK
  - FLOW LINE
  - HP HIGH POINT
  - LP LOW POINT
  - C 2513.50 CONCRETE SPOT GRADE
  - FG 2513.50 FINISHED GRADE
  - FL 2513.50 FLOW LINE SPOT GRADE
  - P 2513.50 PAVEMENT SPOT GRADE
  - TC 2514.00 TOP OF CURB SPOT GRADE
  - G 2513.50 GUTTER SPOT GRADE
  - EX 2513.5+ EXISTING SPOT GRADE
  - 2510 EXISTING MAJOR CONTOUR
  - 2511 EXISTING MINOR CONTOUR
  - 2510 NEW MAJOR CONTOUR
  - 2511 NEW MINOR CONTOUR

PARKING LOT RESTORATION  
TUCSON, AZ  
PISTOR MIDDLE SCHOOL

**DIBBLE**  
Project No.: 1018110.26  
Date: 07/2022  
Designed: GDV  
Drawn: DGM  
Checked: GDV



GRADING &  
DRAINAGE PLAN

SHEET: C4.1

SCALE: 1"=20'

PAGE 5 OF 5

